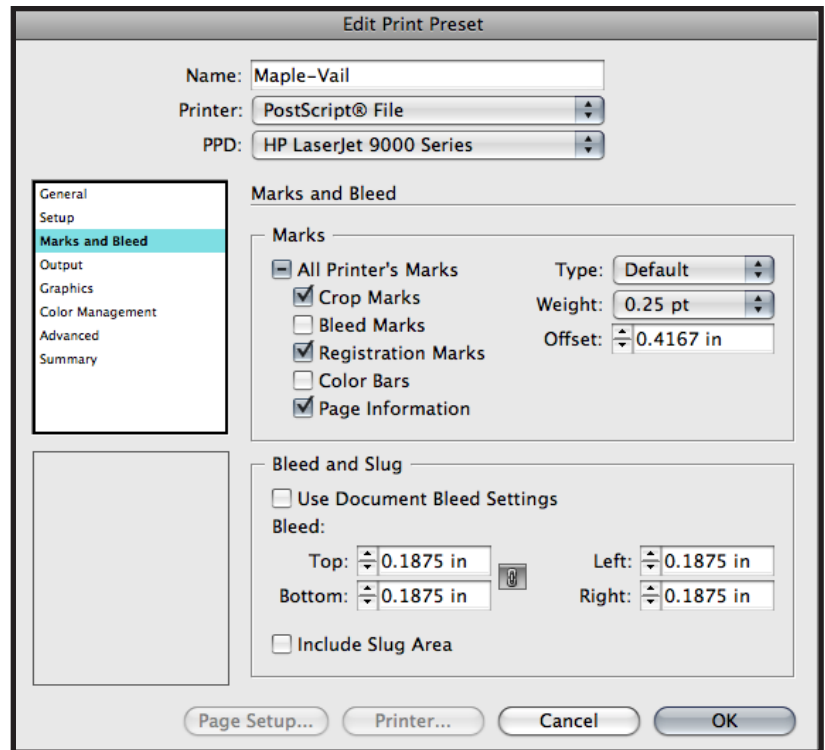


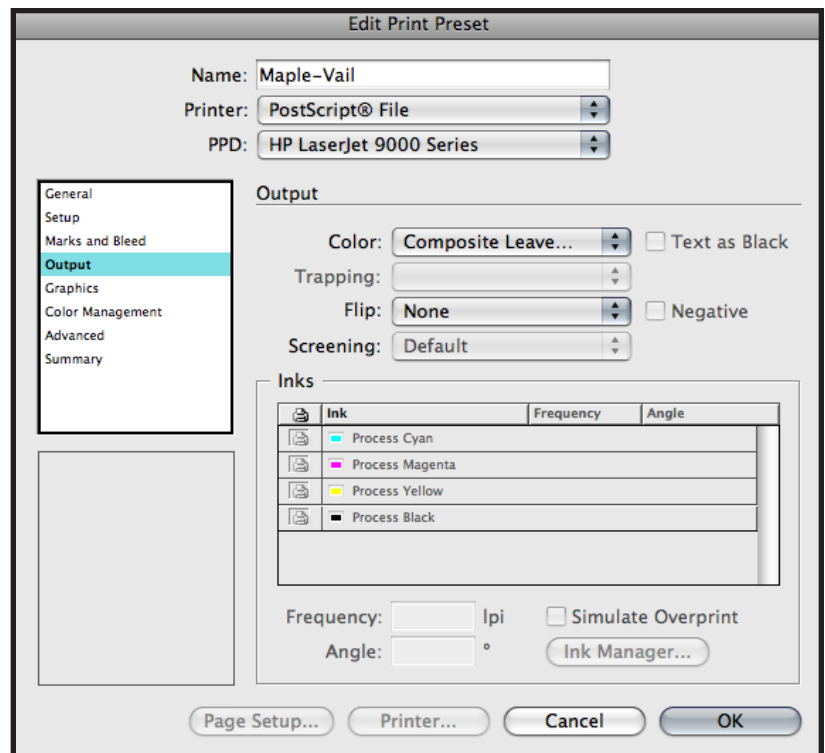
Marks & Bleed:

- Select *All Printer's Marks*
- Select *Crop Marks*
- Select *Registration Marks*
- Select *Page Information*
- Select *Type*: Default
- Select *Weight*: .25 pt
- Select *Offset*: .4167 inches
- Select *Bleed*: *Top*: .1875 inches
Inside: .1875 inches
Bottom: .1875 inches
Outside: .1875 inches



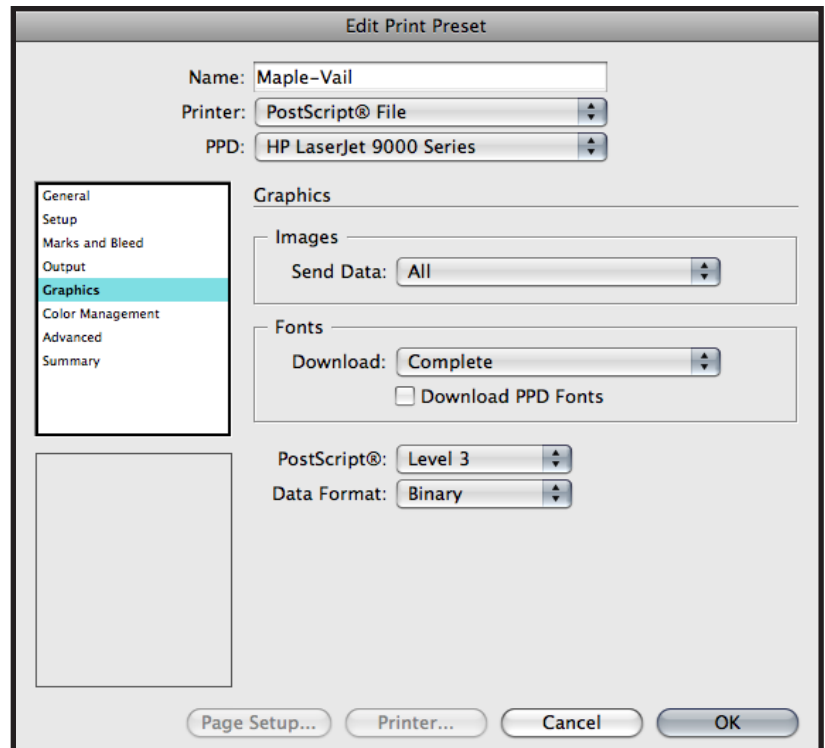
Output:

- Select *Color*: Composite Leave Color Unchanged (suitable for process and spot color work color work)
- Select *Flip*: None
- Select *Screening*: Default
- *Inks*: Review list to verify no unintended colors are included (simply disabling output of undesired colors could result in elements missing from final file)



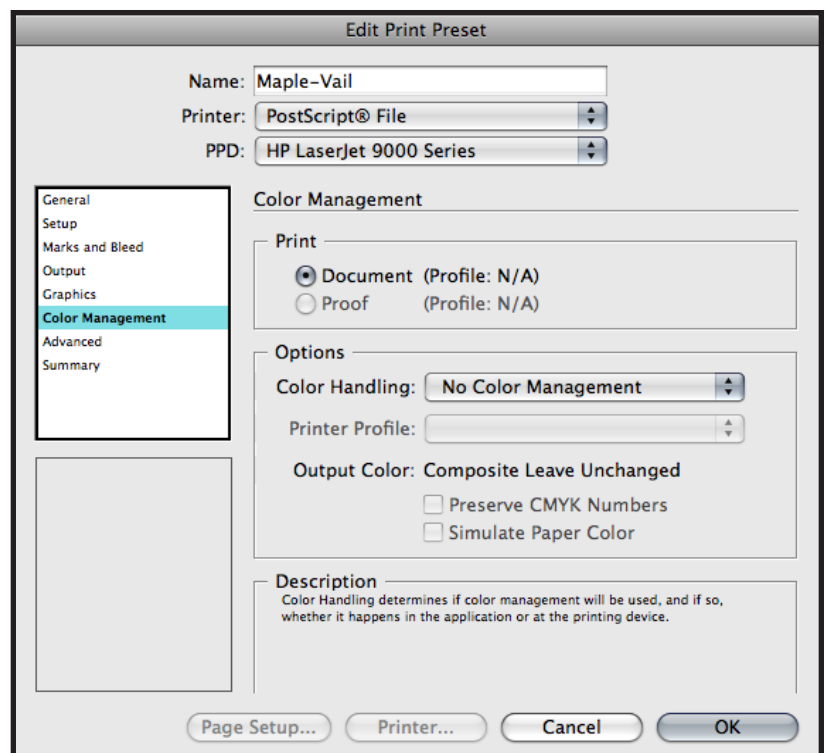
Graphics:

- Select *Send Data*: All
- Select *Download*: Complete
- Deselect *Download*: PPD Fonts
- Select *PostScript*: Level 3
- Select *Data Format*: Binary



Color Management:

No selections needed in this window, due to the output setting to “leave color unchanged.” Other settings could result in final file being translated to an unwanted color space.



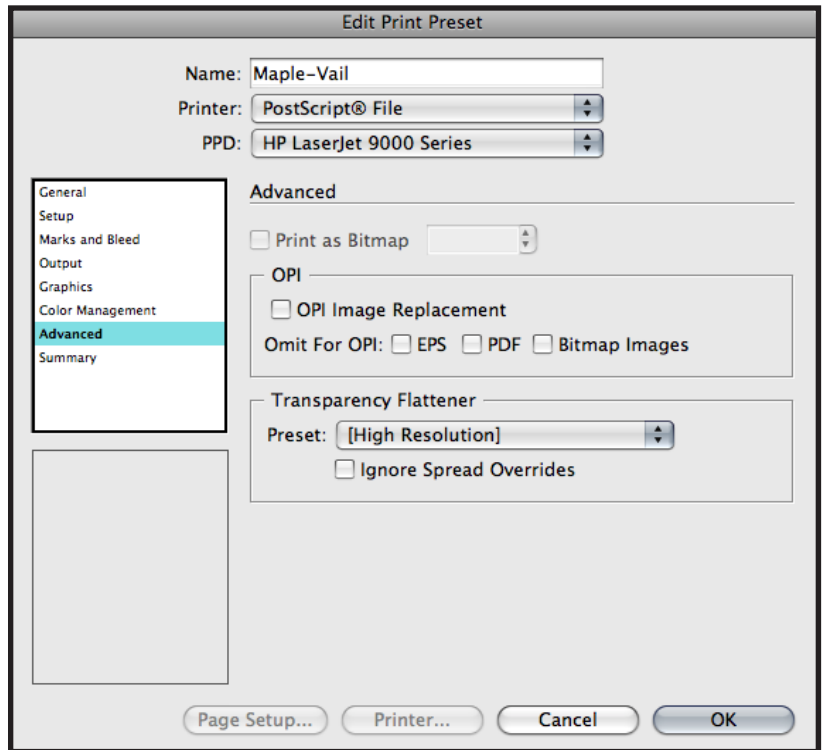
Advanced:

Transparency Flattener

- Select *Preset*: High Resolution

Step one of selecting Print Presets is now complete.

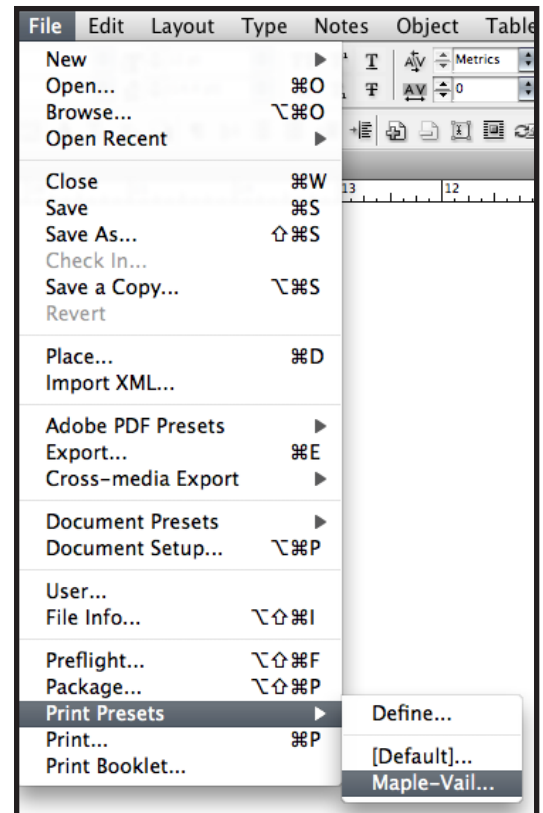
- Select *OK* to save new settings.



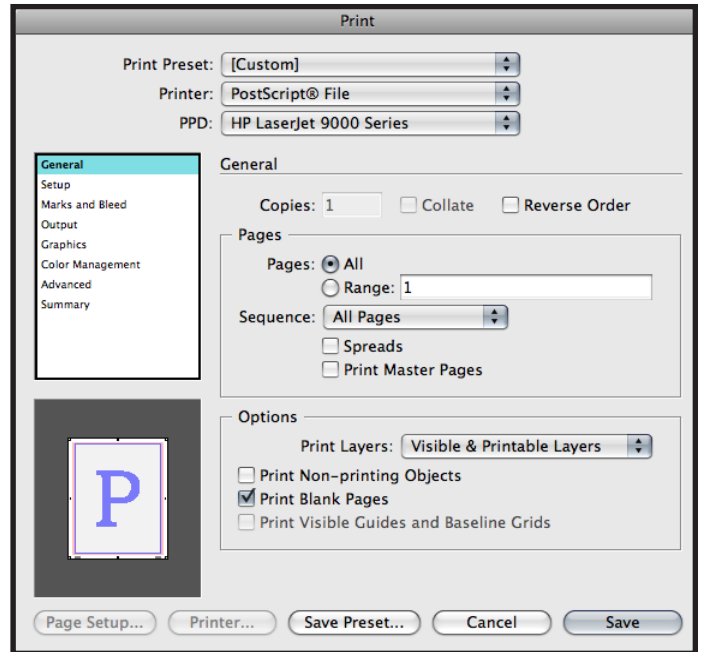
Step 2.

Writing a Postscript file using Predefined Print Preset:

- With your InDesign file open, select the Print dialog box within InDesign, select Print Preset defined during the previous steps. File>Print Presets>Maple-Vail



- The preset loads and displays all the settings. Do not change any settings at this point. Just click on the Save button.



- Name the PostScript file and select the destination folder.

Creating a PDF file from Postscript:

Once the PostScript file is created, follow recommended standards for Distiller at the following web site link:
<http://www.maple-vail.com/prepress/DistillingInstructions.html>

